

# NEELY'S BEND ELEMENTARY SCHOOL



1300 Neely's Bend Rd. | Nashville, TN 37128 | 615-860-1471



## 279 STUDENTS

48% Hispanic/Latino  
1% Asian  
19% White  
32% African American



## 30 FACULTY & STAFF





## 6 COMMUNITY PARTNERS

### SERVES GRADES PRE-K-4 IN THE HUNTERS LANE CLUSTER

- ✓ Open Enrollment
- ✓ Offers Bus Transportation
- ✓ Offers Before or After Care

#### ADMINISTRATION

Executive Principal: Kimberly Bullock  
Dean of Instruction: Lori Likins  
Counselor: Lori Lee  
School Board Representative: Jill Speering

 [schools.mnps.org/neelys-bend-elementary-school](https://schools.mnps.org/neelys-bend-elementary-school)  
 @NeelysBendES

#### SCHOOL HIGHLIGHTS

- ★ Neely's Bend Elementary is a school that believes in giving students the very best, 100% of time for maximum growth.

#### DRESS CODE

**Tops:** Any solid color collared shirt.  
**Bottoms:** Navy, black or khaki pants, shorts, skirts or jumpers

#### FEATURED EXTRACURRICULAR ACTIVITIES

Elementary National Honor Society, Yearbook Club  
Student Ambassadors

#### FEATURED COMMUNITY PARTNERS

Madison Kiwanis Club, Neely's Bend Baptist Church  
Nike, Regions Bank, BMW

#### PARENT ORGANIZATION PTO



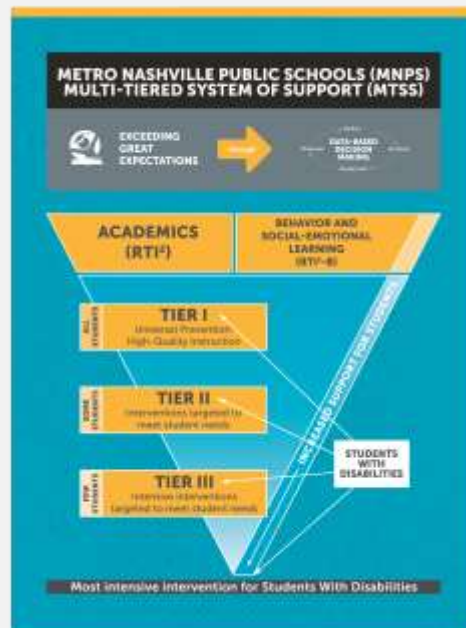
The Metropolitan Nashville Public Schools (MNPS) does not discriminate on the basis of race, religion, creed, sex, gender, gender identity, sexual orientation, national origin, color, age, and/or disability in admission to, access to, or operation of its programs, services, or activities. MNPS does not discriminate in its hiring or employment practices.

### MULTI-TIERED SYSTEM OF SUPPORT (MTSS)

Metro Schools knows our students each have a unique set of needs and the teaching and learning in our classrooms must reflect that. Through our Multi-Tiered System of Support (MTSS) framework, educators and administrators have proven tools at their disposal to support a timely and effective response to academic and behavioral needs for each student — meeting the child where they are.

### HOW MTSS WORKS

Our school has a dedicated MTSS team, representative of teachers and leaders throughout the building. This team meets to discuss students who may need additional supports and reviews each student’s supporting data. Our MTSS data team meets every five weeks to identify students who may need additional supports and interventions. This team monitors students’ progress and adjusts plans as needed.



### MTSS IN ACTION AT NEELY’S BEND ELEMENTARY

Universal Supports for All Students	Targeted Supports and Interventions	Intensive Supports and Interventions
<ul style="list-style-type: none"> <li>• Clear expectations for daily attendance</li> <li>• School-wide positive behavior expectations</li> <li>• Equitable access to rigorous grade-level, standards-based instruction that is culturally responsive and integrates social/emotional development</li> <li>• Inclusive partnerships with families and communities</li> <li>• Consistent school-wide discipline procedures</li> <li>• Physical activity and nutrition services</li> </ul>	<ul style="list-style-type: none"> <li>• Check in/out (The Behavior Education Program)</li> <li>• I-Ready ELA</li> <li>• S.P.I.R.E.</li> <li>• Dreambox</li> <li>• I-Ready Math</li> </ul>	<ul style="list-style-type: none"> <li>• Behavior Intervention Plan</li> <li>• On-going solution focused counseling</li> <li>• Small group behavioral skills instruction</li> <li>• S.P.I.R.E.</li> <li>• Wilson Reading</li> <li>• I-Ready Math</li> </ul>